

PALMER **Wahl**

INSTRUMENTATION GROUP

America's First Manufacturer of Precision
Industrial Temperature and Pressure Instrumentation

- FIRST Thermometer in America - The Foster Cup
- FIRST Red-Reading-Mercury Thermometer
- FIRST Direct Drive Double Wound Coil for Dial Thermometers
- FIRST Miniature Temperature Recording Labels
- FIRST Portable Digital Infrared Thermometer
- FIRST Replaceable Element Bimetal Thermometer
- FIRST Portable Digital Platinum-RTD Thermometer
- FIRST Thermocouple Surface Probe
- FIRST Universal Digital Soldering Iron Tester
- FIRST Sanitary Bimetal Thermometer
- FIRST Slip-Fit Bimetal Thermometer
- FIRST Self-Checking Digital Platinum-RTD Meter

*Celebrating
Innovation
since
1836*



Our Company

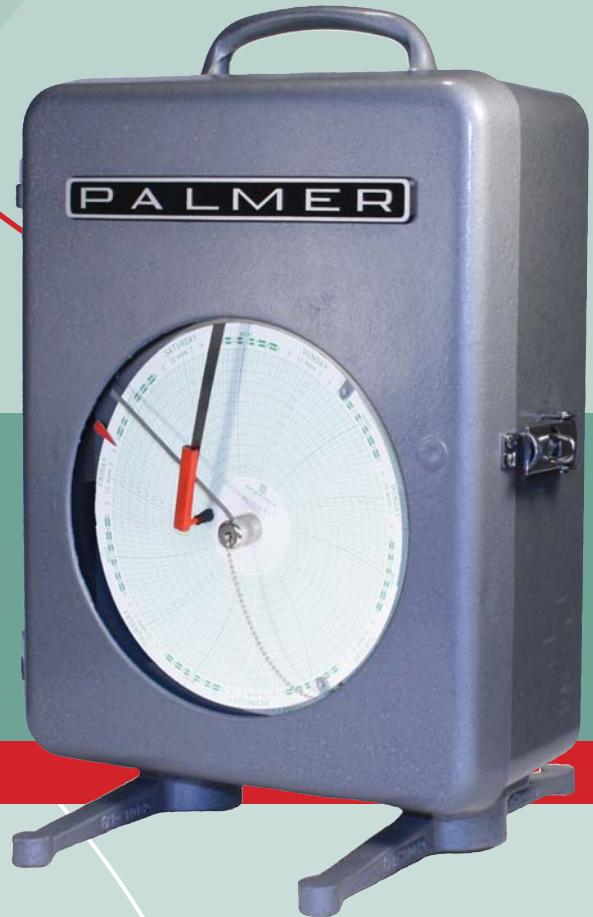
Palmer Instruments and Wahl Instruments, with more than a century of *Firsts* in temperature technology, have come together to offer a complete line of temperature, pressure, test and calibration instruments from our manufacturing facility in Asheville, North Carolina.

Family owned and operated, our history is built on our reputation of outstanding product development, quality, and customer service. Our future is dedicated to innovating more industry *Firsts* in instrumentation.

Palmer Circular Chart Recorders

Pressure & Temperature Recorders

Designed for indoor or outdoor use, our recorders provide long service life, even in harsh conditions.



Proven reliability for your toughest application.

Versatility that adapts to your needs.

Internal Assemblies, Clocks and Parts

- All internal components are corrosion resistant.
- Each recorder may contain up to three (3) felt tip pens.
- Pen assembly is designed to transmit the movement of the sensors into a smooth, gliding arc across the chart. This prevents burrowing, resulting in longer pen life and better accuracy.
- Micro adjustment feature simplifies calibration.
- Wire linkage.
- Palmer PC-11 multi-speed battery operated chart drive is standard. Electric (115 or 220V and 60 or 50 Hertz), or Spring Wound optional. Rotation periods include 24 and 48 hours and 7, 8, 30, 31 and 32 days.
- Charts sold separately.

Case and Door Features

- Made of heavy aluminum, die cast and heat treated to prevent distortion or warping. Two sizes: 8 and 12 inch charts.
- Weather tight glass window and door (plexiglass window, solid door, and door stop optional).
- Pressure Recorders have 1/2" diameter air vent holes in case.
- Draw pull latch with hasp for padlock (Double Latch Bar with padlock type handle, solid door included optional).
- Hammertone Gray finish standard, other colors available.
- Temperature and/or pressure connections are located at the back, top, or bottom of case, depending on mounting style:
 - Wall mounted
 - Flush mounted
 - Pipestand mounted
 - Pedestal mounted
 - Portable

PALMER Wahl

INSTRUMENTATION GROUP

Building Recorders in the USA since 1962



How to Order a Palmer Recorder

Wall Mount - Furnished with armored capillary or pressure connection at the bottom of case unless otherwise specified.

Flush Mount - Furnished with armored capillary or pressure connection at the back of the case. Front door latch standard.

Pipestand Mount - Furnished with armored capillary or pressure connection at the bottom of case unless otherwise specified.

Portable - Supplied with flexible armor or pressure connection at the back of the case unless otherwise specified.

Pedestal Mount - Flexible armored capillary or pressure connection may be furnished at the back, top or bottom of case if specified in the customer's order.

Specifications subject to change without notice.



Wall Mount - Code 2



Flush Mount - Code 3



Pipestand Mount - Code 4



Portable - Code 5



Pedestal Mount - Code 8

Additional Ordering Requirements

- Range
- Lens, Door, and Latch Style
- Number of Pens/Color
- Chart Drives
- Rotation Period
- Charts (not included, 5 box min)
- Pressure Element
- Temperature System
- Cable Length (5 ft standard)

Recorders Selection Guide

Order additional requirements as separate line item
Operating and maintenance manuals are included with all models.

Code	Type of Measurement
1	Pressure
2	Temperature
3	Pressure/Temperature (2 Pen)
4	Pressure with Valve & Test Connection

Code	Recorder Case Size
2	12" Chart Case
8	8" Chart Case

Code	Case Mounting
2	Wall Mount
3	Flush Mount
4	Pipestand Mount
5	Portable
8	Pedestal Mount

2 8 4 Typical Recorder Configuration

Model 284 Recorder is an 8" Case, Temperature Recorder with Pipestand Mounting

**Palmer can custom build to meet your special requirements.
Call 1-800-421-2853**



Palmer recorders are hand-crafted to last longer than any other product in the market.

Pressure Ranges - from 0 to 30,000 psig are offered in both 8" and 12" chart recorders. Recorder accuracy is $\pm 1/2$ " chart graduation.

Pressure Recorder Ranges	
0 / 15	0 / 800
0 / 30	0 / 1000
0 / 50	0 / 1500
0 / 60	0 / 2000
0 / 100	0 / 2500
0 / 120	0 / 3000
0 / 150	0 / 4000
0 / 200	0 / 5000
0 / 250	0 / 6000
0 / 300	0 / 7000
0 / 350	0 / 8000
0 / 400	0 / 10,000
0 / 500	0 / 15,000
0 / 600	0 / 20,000
0 / 750	0 / 30,000

Note: Other ranges available upon request

Temperature Ranges - from -40°F to 1000°F are offered in both 8" and 12" chart recorders. Recorder accuracy is ± 1 chart graduation.

Temperature Recorder Ranges		
Range	Degree Divisions	Degree Numbered
-30° / 70°F	1°	5°
60° / 90°F	2°	10°
0° / 100°F	2°	10°
-40° / 110°F	2°	10°
-30° / 120°F	2°	10°
0° / 120°F	2°	10°
0° / 150°F	2°	10°
-40° / 160°F	2°	10°
60° / 160°F	1°	5°
30° / 240°F	2°	10°
0° / 250°F	5°	25°
100° / 250°F	2°	10°

Temperature Recorder Ranges		
Range	Degree Divisions	Degree Numbered
0° / 300°F	5°	25°
0° / 375°F	5°	25°
0° / 400°F	5°	25°
50° / 400°F	1°	5°
0° / 500°F	10°	50°
0° / 600°F	10°	50°
100° / 600°F	5°	25°
0° / 750°F	10°	50°
0° / 800°F	10°	50°
0° / 1000°F	20°	100°
200° / 1000°F	10°	50°

Note: Other ranges available upon request
Celsius equivalents also available

234 Old Weaverville Road • Asheville, North Carolina • 28804-1260
Phone: 800-421-2853 • 828-658-3131 • Fax: 828-658-0728 • Email: info@palmerwahl.com

DHS85XL • DHS115XL • DHS115XEL

Wahl is pleased to introduce six models to our famous line of Heat Spy® Infrared Thermometers, the **DHS85XL**, **DHS115XL**, **DHS115XEL**, **DHS135XEL**, **DHS215XEL** and the **NEW! DHS235XEL** (see pg 9). These incredibly accurate and robust instruments will help you diagnose any problem, and prevent costly equipment downtime. The variety of features enable you to select the most appropriate Heat Spy® for your application.



DHS85XL

DHS85XL Model Features

- The most economical and highest performing Heat Spy in its class
- Used for Close Range: 8:1 (D:S Ratio)
- Maximum temperature: 619°F (326°C)
- Ultra low power consumption in shut-down mode

Note: The DHS85XL replaces discontinued model DHS100X and DHS110XL

DHS115XL Model Features

- Used for Short Range: 12:1 (D:S Ratio)
- Temperature Range to 999°F (535°C)
- Easy Aiming
- Quick Response
- Easy location of hot spots
- Ultra low power consumption in shut-down mode

DHS115XEL Model Extended Features

Same great features as the 115XL, *Plus:*

- Includes Hi, Low Alarms
- MAX/MIN/AVG/ΔT calculations
- Adjustable Emissivity for better accuracy
- 10 points of memory to record temperature
- Electronic trigger lock which allows readings to be taken continuously



**DHS115XEL
and DHS115XL**

Note: The DHS115XL and DHS115XEL replace discontinued models DHS100XL, DHS100XEL and DHS110XL.

APPLICATIONS

- Quality/Non-Destructive Testing
- Electrical Troubleshooting
- Manufacturing Process Control
- Diesel/Fleet Maintenance
- Plant/Facilities Maintenance
- HVAC/Refrigeration
- Automotive Repair and Diagnostics

